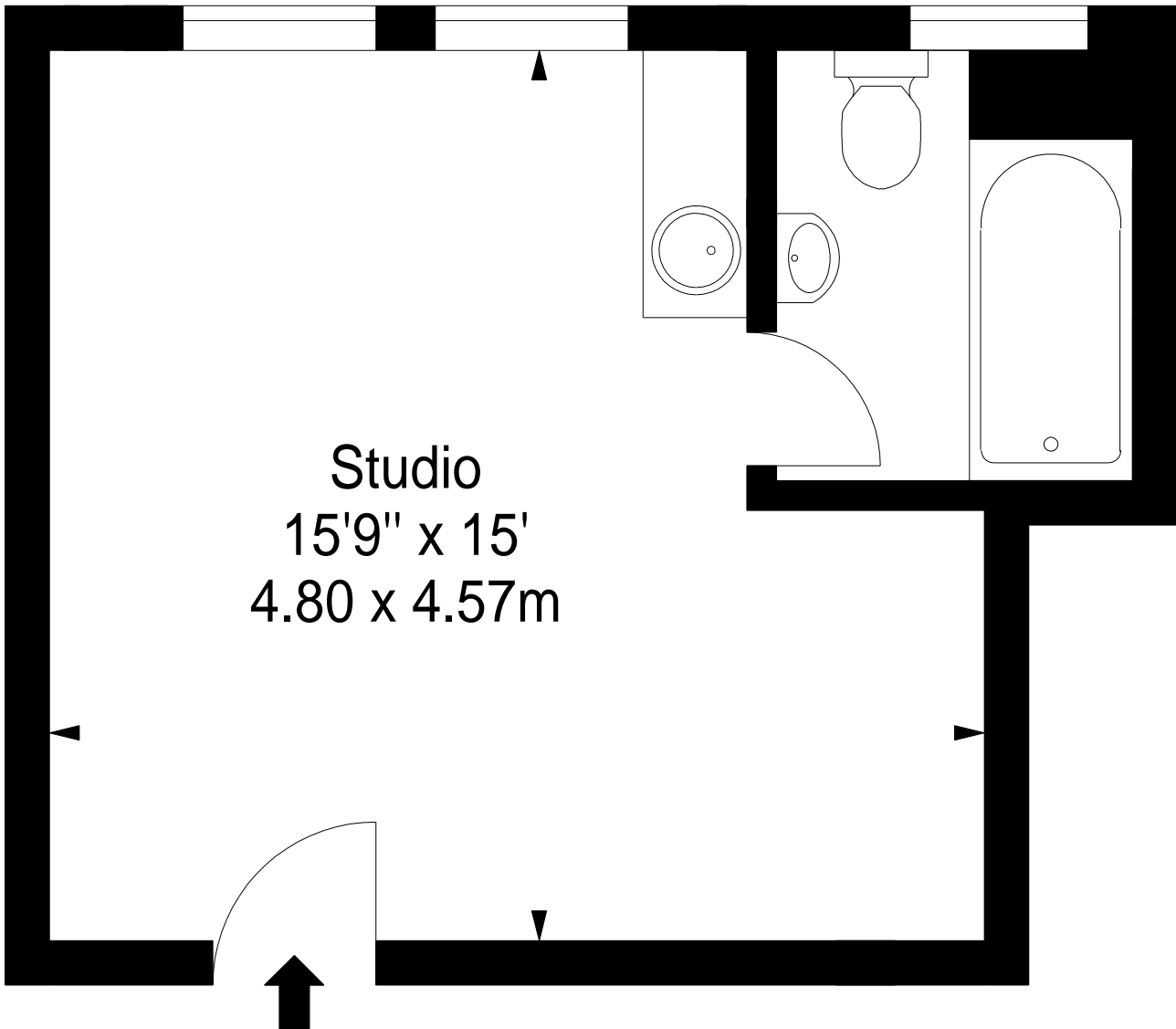


5 PELHAM COURT, SW3

Approx. Gross Internal Area *
254 Ft² - 23.60 M²

Illustration For Identification Purposes Only. Not to Scale
* As Defined by RICS - Code of Measuring Practice



Studio
15'9" x 15'
4.80 x 4.57m

LOWER GROUND FLOOR

BKR

www.bkrfloorplans.co.uk

T: 0845 257 2023

© BKR 2010