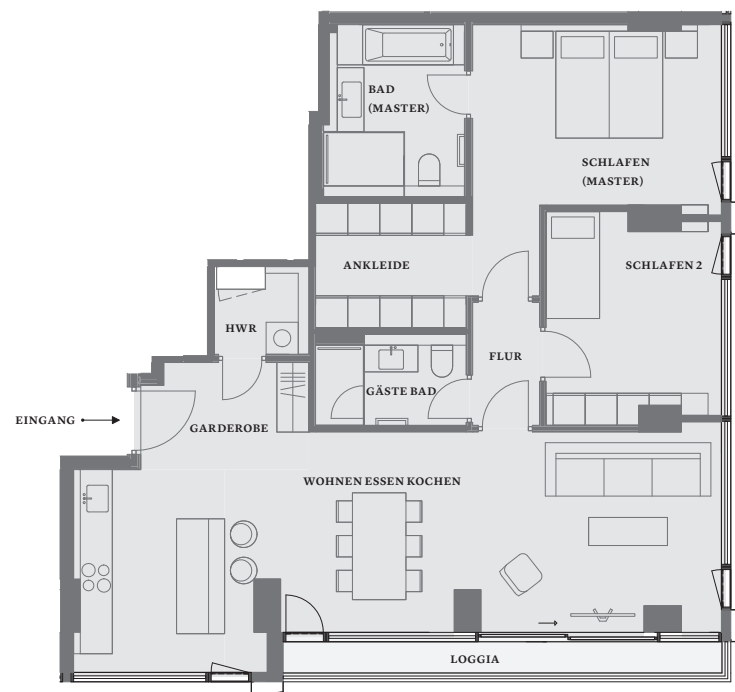


160 PARK VIEW

W 4

11. ETAGE PREMIUM 3-ZI. - WHG

WOLFGANGSTRASSE 160,
60323 FRANKFURT AM MAIN



SÜD (SKYLINE)

OST

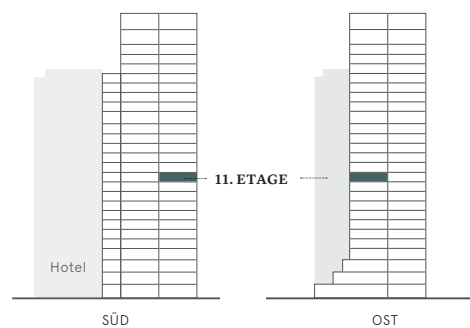
RAUM / SPACE	WFL / SQ M
WOHNEN ESSEN KOCHEN LIVING DINING KITCHEN	43.8 m ²
SCHLAFEN (MASTER) / MASTER BEDROOM	17.8 m ²
SCHLAFEN 2 / BEDROOM 2	12.1 m ²
BAD (MASTER) / BATHROOM (MASTER)	8.2 m ²
GÄSTE BAD / GUEST BATHROOM	4.6 m ²
ANKLEIDE / DRESSINGROOM	6.7 m ²
GARDEROBE / WARDROBE	6.1 m ²
HWR / UTILITY	2.4 m ²
FLUR / CORRIDOR	2.8 m ²
LOGGIA / LOGGIA	0.5 X 4.8 m ²
GESAMT/ TOTAL	106.9 m²



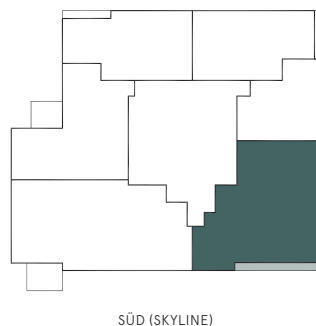
Maßstab
1/100

0m 2m

VERORTUNG



NORD (PARK)



HAP FRANKFURT GMBH & CO. KG
A PROJECT BY HINES, RFR & REVCAP

EXCLUSIVE CONTINGENT SALE:
Quintessentially Estates Germany
Sendlinger-Tor-Platz 8
80336 Munich
+49 (89) 3791 7050
germany@quintessentiallyestates.com

EXCLUSIVE SALE:
Dr. Than Immobilien